

CORNER RECORD

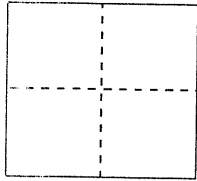
BK 60 PG 26

Document Number CR6290

City of Oakland

County of Alameda, California

Brief Legal Description City of Oakland monument 20NW9, on Seminary Avenue at Walnut St.



CORNER TYPE

Government Corner ☐ Control ☒
Meander ☐ Property ☐
Rancho ☐ Other ☐
Date of Survey 6-12-2014

COORDINATES (Optional)

N 2107857.021
E 6073159.378
Zone NAD27 ☐ NAD83 ☒
NAD83 Epoch 2014.250
Elev. 62.96
Vert. Datum: NGVD29 ☐ NAVD88 ☒
Meas. Units: Metric ☐ Imperial ☒

Corner - Left as found ☒ Found and tagged ☐ Established ☐ Reestablished ☐ Rebuilt ☐

Identification and type of corner found: Evidence used to identify or procedure used to establish or reestablish the corner:
The City of Oakland, pin monument, 20NW9 is located at the intersection of the survey line located 5 ft. west of the centerline of Seminary Avenue with the survey line located 5 ft. north of the centerline of Walnut Street as shown on the City of Oakland Monument Index Sheet number 112. Data is on file in the City Land Surveyor's office, City of Oakland, California. In compliance with Section 8771 Professional Land Surveyor's Act, this corner record is being filed PRIOR to street improvement project.

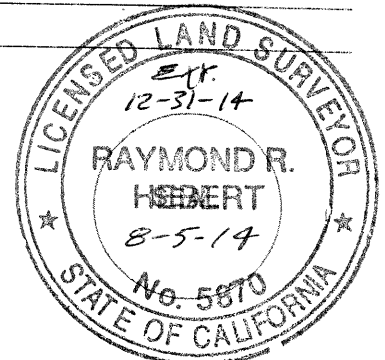
A description of the physical condition of the monument as found and as set or reset:

The monument is in good condition.

SURVEYOR'S STATEMENT

This Corner Record was prepared by me or under my direction in conformance with the Professional Land Surveyor's Act on 8-04-2014

Signed [Signature] P.L.S or R.C.E. No. 5870



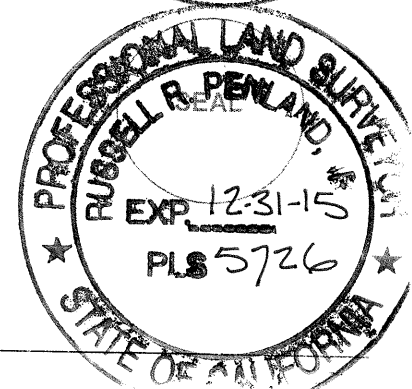
COUNTY SURVEYOR'S STATEMENT

This Corner Record was received 6-17-14
and examined and filed 8-8-14

Signed [Signature] P.L.S or R.C.E. No. 5726

Title COUNTY SURVEYOR

County Surveyor's Comment:



MT93B6

LEGEND

- FOUND STANDARD STREET MONUMENT
- x FOUND CUT CROSS
- ⌘ SET PK OR MAG NAIL OR AS NOTED
- COUNTY DESIGNATION



SCALE 1"=40'

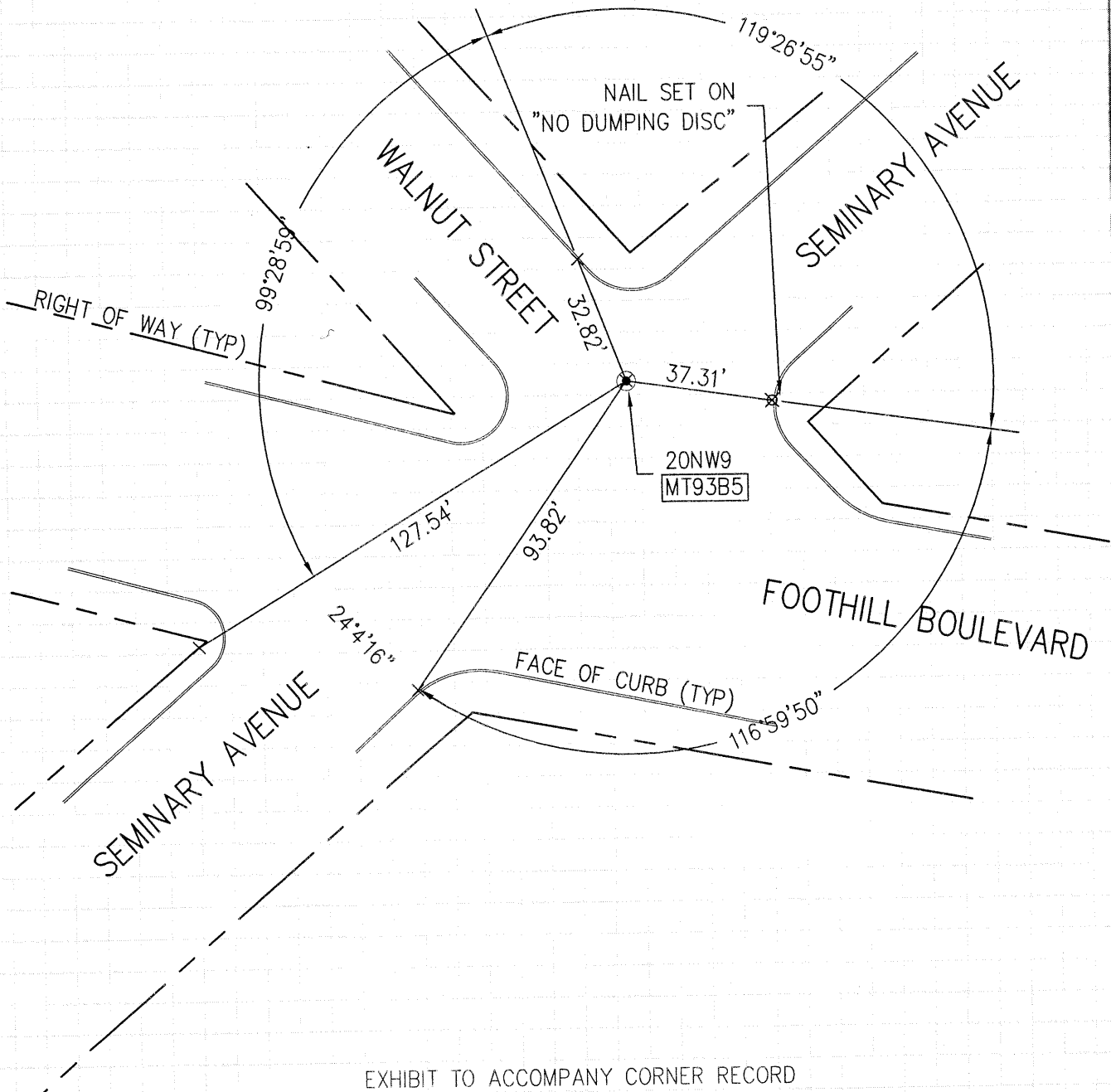


EXHIBIT TO ACCOMPANY CORNER RECORD
BUREAU OF ENGINEERING AND CONSTRUCTION
CITY OF OAKLAND, COUNTY OF ALAMEDA, STATE OF CALIFORNIA