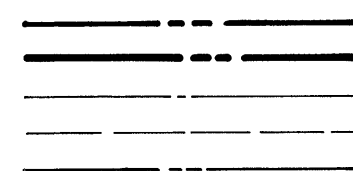


NOTES

- 1) ALL EASEMENT AREAS SHOWN ARE NON-BUILDABLE AND ARE TO BE KEPT FREE FROM STRUCTURES.
- 2) ALL DIMENSIONS SHOWN HEREON ARE IN FEET AND DECIMALS THEREOF.
- 3) ALL BUILDING LINES ARE EITHER PARALLEL OR PERPENDICULAR TO THE BEARING N 76° 12' 38" E.
- 4) BUILDING DIMENSION AND TIES TO PROPERTY LINE ARE PER ARCHITECTURAL SITE AND BUILDING PLANS.
- 5) BUILDING SETBACK LINES TO BE PER CITY OF FREMONT ZONING ORDINANCE.
- 6) ALL LAND SUBDIVIDED BY THIS MAP SHALL BE DESIGNATED AS COMMON AREA EXCLUDING THAT PORTION WITHIN EXISTING BUILDING LINES.

LEGEND



⊙

M-M

•

PUE

JAE

EVAE

PSDE

PARCEL LINE
BOUNDARY LINE
MONUMENT LINE
EASEMENT LINE
EXISTING PARCEL LINE
CITY MONUMENT PER PARCEL MAP NO. 4108
143 M 77, 78
MONUMENT TO MONUMENT
3/4" IRON PIPE AND TAG L5 3936 PER
PARCEL MAP 4108 143 M 77, 78
PUBLIC UTILITY EASEMENT
JOINT ACCESS EASEMENT
EMERGENCY VEHICLE ACCESS EASEMENT
PRIVATE STORM DRAIN EASEMENT

PARCEL MAP NO. 4762

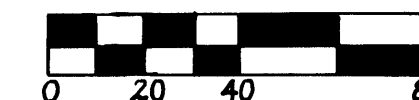
CITY OF FREMONT, ALAMEDA COUNTY, CALIFORNIA

CONSISTING OF TWO SHEETS

BEING A 2 LOT INDUSTRIAL CONDOMINIUM SUBDIVISION CONSISTING OF 96 CONDOMINIUM UNITS AND BEING ALL OF PARCELS 1 AND 2, OF PARCEL MAP NO. 4108 RECORDED IN BOOK 143 OF MAPS AT PAGES 77 AND 78, ALAMEDA COUNTY RECORDS.

SCALE: 1" = 40'

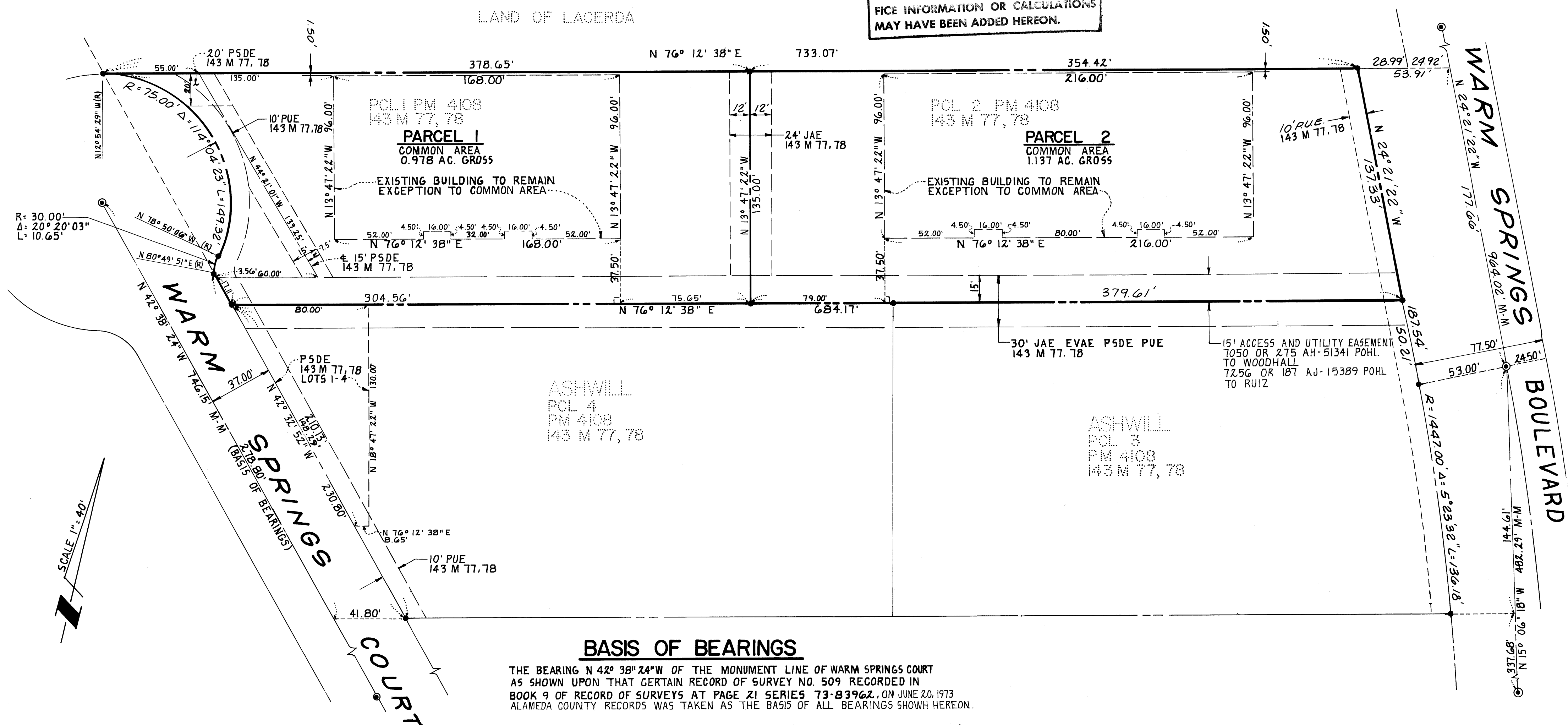
DATE: JANUARY 1986



DESIGN & ENGINEERING SYSTEMS INC.

ARCHITECTS PLANNERS ENGINEERS FREMONT BRANCH OFFICE
39233 LIBERTY ST., SUITE "Y" FREMONT, CA. 94538 (415) 790-1441

★ USE WITH CAUTION ★
THIS IS A PUBLIC WORKS DEPARTMENT
WORKING COPY OF AN OFFICIAL MAP
ON FILE IN THE OFFICE OF THE COUNTY
RECORDER, COUNTY OF ALAMEDA. OF-
FICE INFORMATION OR CALCULATIONS
MAY HAVE BEEN ADDED HEREON.



BASIS OF BEARINGS

THE BEARING N 42° 38' 24" W OF THE MONUMENT LINE OF WARM SPRINGS COURT AS SHOWN UPON THAT CERTAIN RECORD OF SURVEY NO. 509 RECORDED IN BOOK 9 OF RECORD OF SURVEYS AT PAGE 21 SERIES 73-83962, ON JUNE 20, 1973 ALAMEDA COUNTY RECORDS WAS TAKEN AS THE BASIS OF ALL BEARINGS SHOWN HEREON.

Series # 86 - 104212

SHEET 2 OF 2

JOB # 790-2574-01

filed 5-1-86 159/97

PM 4762

16/651

MAP BK 159 Pg 97