

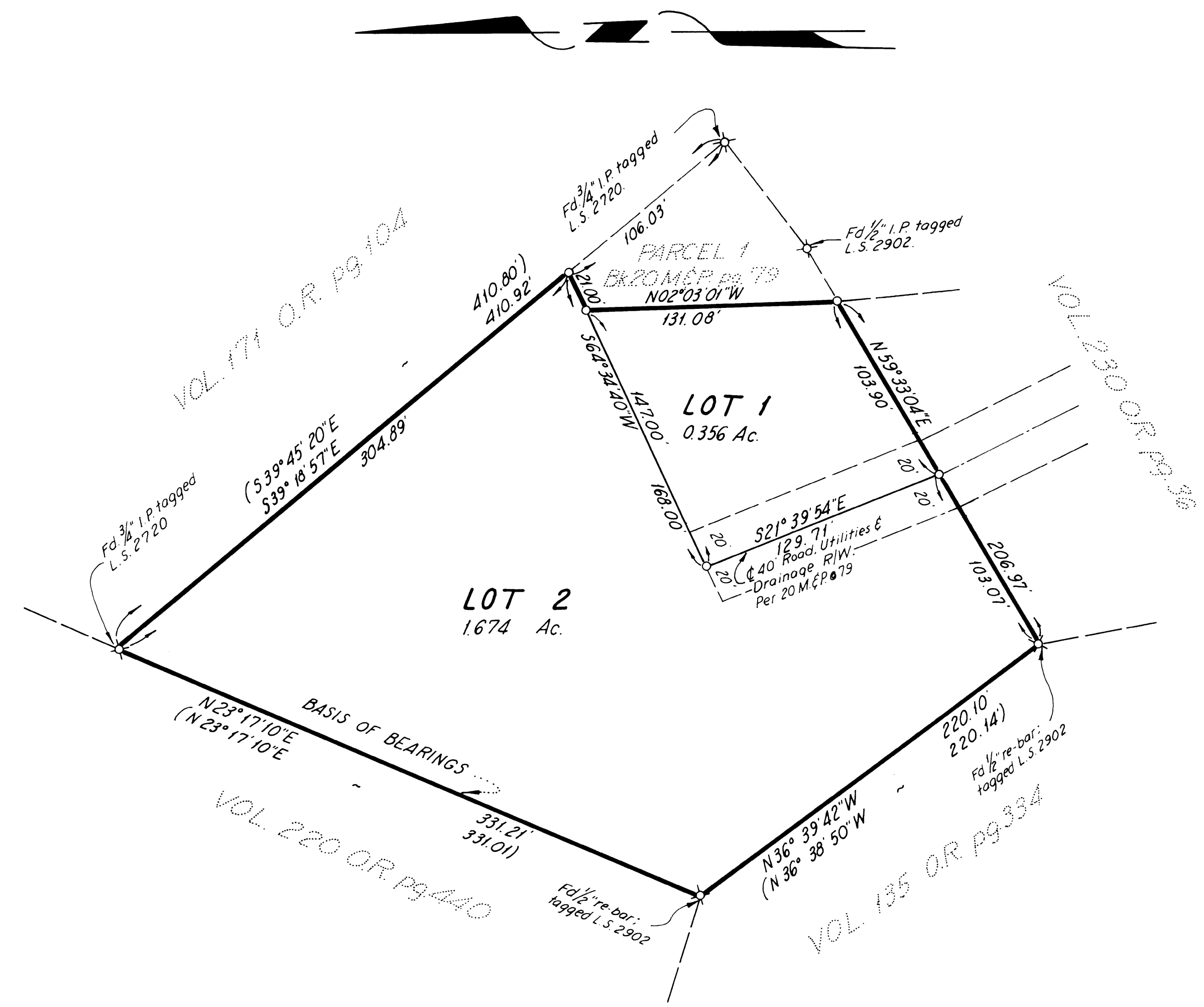
# PARCEL MAP NO. 1260 FOR J.P. DRABLOS

VOL. 173 O.R., PAGE 137  
IN THE UNINCORPORATED TERRITORY OF AMADOR COUNTY, CALIFORNIA  
BEING A DIVISION OF A PORTION OF LOT 1, BLOCK 4, PINE GROVE TOWNSITE  
SE 1/4 OF SECTION 33, T. 7 N., R. 12 E., M.D.M.

Scale: 1" = 50'

October, 1973

O'DELL ENGINEERING INC.  
Civil Engineers · Planners · Surveyors  
Nevada City, California



## SURVEYOR'S CERTIFICATE

This map was prepared by me or under my direction and is based upon a field survey in conformance with the requirements of the Subdivision Map Act, at the request of J. P. Drablos, in August, 1973. I hereby certify that it conforms to the approved tentative map and the conditions of approval thereof; that all provisions of applicable state law and local ordinances have been complied with.

*J. P. Drablos*  
J. P. Drablos; R.C.E. 19660

## COUNTY SURVEYOR'S CERTIFICATE

This map has been examined this 14<sup>th</sup> day of NOV, 1973, for conformance with the requirements of section 11575 of the Subdivision Map Act.

*Keith J. ...*  
Keith J. ...; L.S. 2724  
Amador County Surveyor

## RECORDER'S CERTIFICATE

Filed this 14<sup>th</sup> day of NOV, 1973, at 4:29 P.M. in Book 23 of Maps & Plats at page 70, at the request of the Amador County Surveyor. Fee \$500.00.

*Anchovy ...*  
Anchovy ...; L.S. 2902  
Amador County Recorder

## BASIS OF BEARINGS

The meridian of this map is identical to the record of survey, recorded in Book 6 of Maps & Plats, at page 53. B.O.B. = N23°17'10\"/>

## LEGEND

- ⊗ Set 3/4\"/>
- ⊗ Fd. Mon. as noted.
- Nothing fd., nothing set.
- (-----) Denotes record data.