

# CORNER RECORD

Agency Index

BK 148 PG 77

Document Number CR 16183

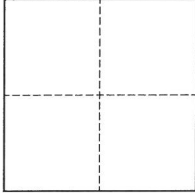
City of Fremont

County of Alameda, California

Brief Legal Description Intersection of Parkmeadow Drive and Ute Court

## CORNER TYPE

## COORDINATES (Optional)



- ☐ Government Corner ☒ Control  
☐ Meander ☐ Property  
☐ Rancho ☐ Other

Date of Survey 2022-07-06

N. \_\_\_\_\_ E. \_\_\_\_\_

Elevation \_\_\_\_\_

Units ☐ Metric ☐ U.S. Survey Foot

Horizontal Datum \_\_\_\_\_

Zone \_\_\_\_\_ Epoch Date \_\_\_\_\_

Vertical Datum \_\_\_\_\_

☐ Complies with Public Resources Code §§8801-8819☐ Complies with Public Resources Code §§8890-8902PLS Act Ref.: ☐ 8765(d) ☒ 8771 ☐ 8773 ☐ Other:

Corner/  
Monument: ☒ Left as found ☐ Established ☐ Rebuilt ☒ Pre-Construction  
☐ Found and tagged ☐ Reestablished ☒ Referenced ☐ Post-Construction

Narrative of corner identified and monument as found, set, reset, replaced, or removed:

☐ See sheet #2 for description(s):

- 3" BRASS DISK, WITH PUNCH, IN WELL, CITY OF FREMONT

## SURVEYOR'S STATEMENT

This Corner Record was prepared by me or under my direction in conformance with

the Professional Land Surveyors' Act on August 16, 2022

Signed Michael Halterman P.L.S. or R.C.E. No. 8040

## COUNTY SURVEYOR'S STATEMENT

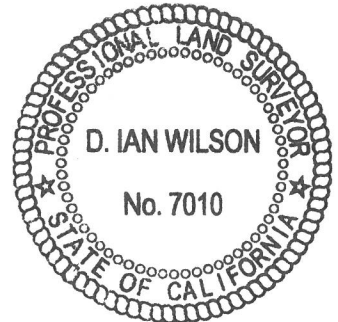
This Corner Record was received \_\_\_\_\_

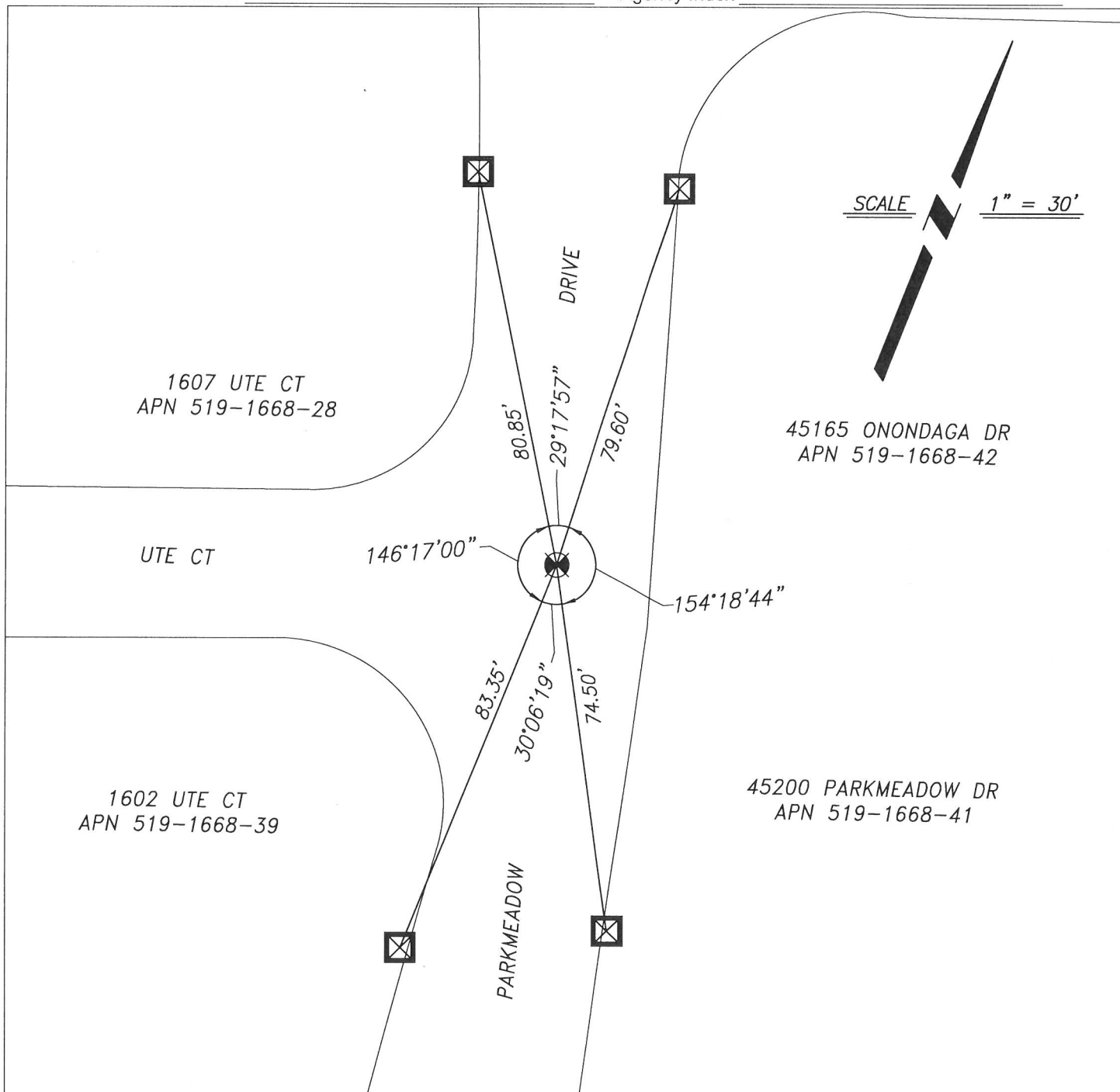
and examined and filed AUG 19 2022

Signed D. Ian Wilson P.L.S. or R.C.E. No. 7010

Title ALAMEDA COUNTY SURVEYOR

County Surveyor's Comment





## REFERENCE

(A) TRACT MAP 3817, TAMARA UNIT NO. 1, IN THE CITY OF FREMONT, FILED ON MAY 18, 1978, IN BOOK 100 OF MAPS, PAGE 96, ALAMEDA COUNTY RECORDS.

## LEGEND

- ⊗ FOUND MONUMENT, 3" BRASS DISK WITH PUNCH, IN WELL, CITY OF FREMONT
- ⊠ SET CUT CROSS ON CONCRETE CURB AS REFERENCE POINT

## NOTES

1. ALL REFERENCES ARE ALAMEDA COUNTY RECORDS