

# ALFONSINA Y EL MAR

Vals

Ariel Ramirez

♩ = 114

N.C. Dm E7

Am

B $\flat$ 7 Em

Am D7 G

Am Em B $\flat$ 7

D E F E | F E D | E D

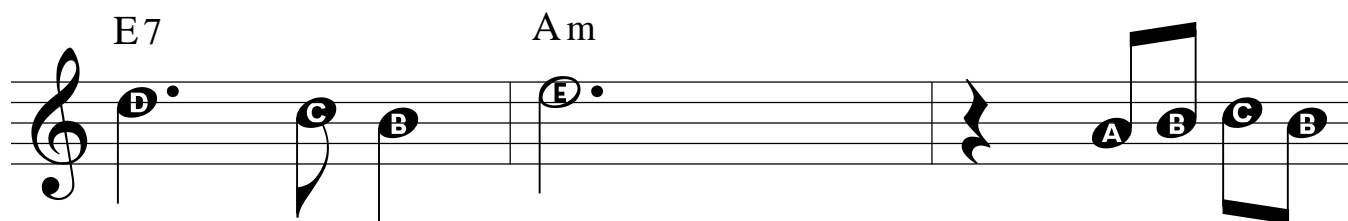
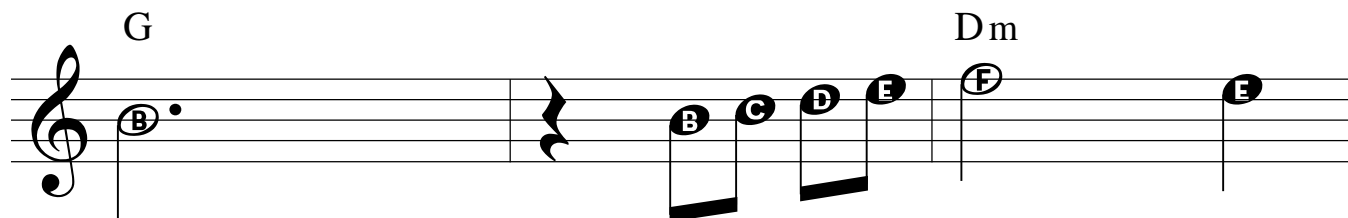
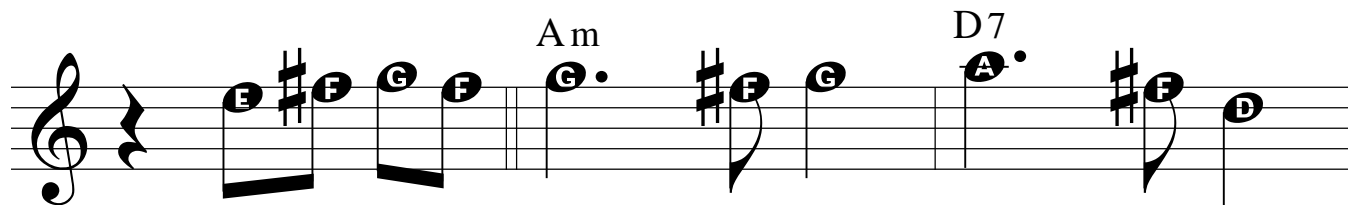
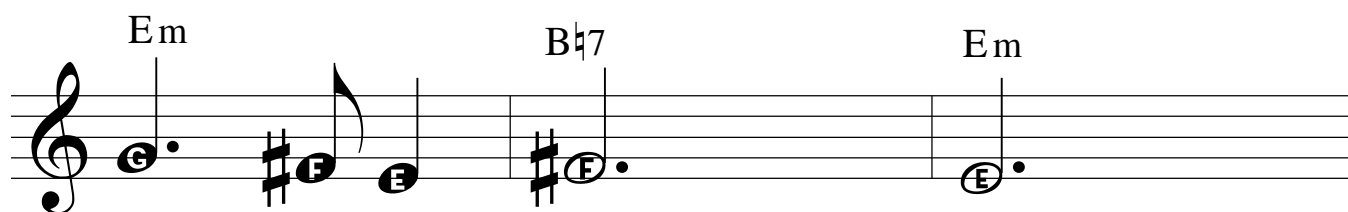
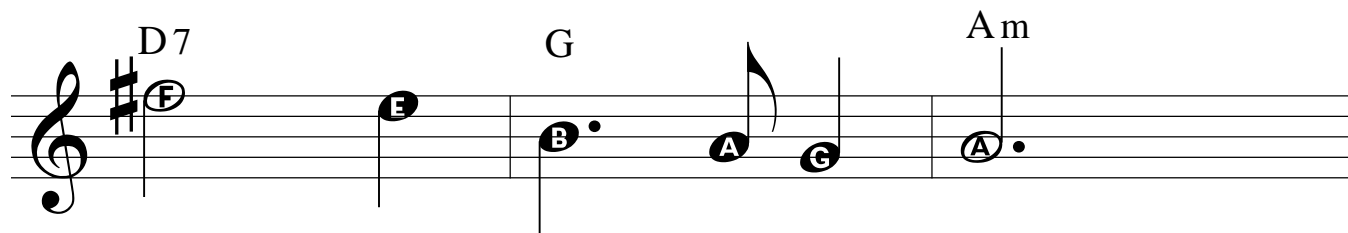
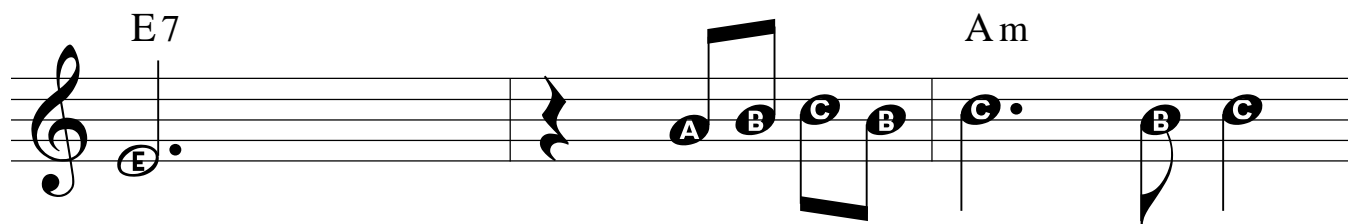
C C | A B C B | C B A

B A | G | E F# G F

G F# G | A G A | B A G

A G F# | G F# E | F#

# ALFONSINA Y EL MAR 2



# ALFONSINA Y EL MAR 3

Em

B $\flat$ 7

Dm E7 Am

Em C

F $\sharp$ 7 B $\flat$ 7 1.Em

2.Em Fine

Detailed description: The musical score is written in treble clef. It consists of seven staves of music. The first staff has a treble clef and a key signature of one sharp (F#). The notes are A4 (quarter), E5 (quarter), D5 (quarter), C5 (quarter), B4 (quarter), A4 (quarter), and G4 (quarter). The second staff has a treble clef and a key signature of one sharp (F#). The notes are E5 (quarter), D5 (quarter), F#5 (quarter), E5 (quarter), D5 (quarter), F#5 (quarter), F#5 (quarter), F#5 (quarter), G5 (quarter), and F5 (quarter). The third staff has a treble clef and a key signature of one sharp (F#). The notes are F#5 (quarter), E5 (quarter), D5 (quarter), C5 (quarter), B4 (quarter), A4 (quarter), and G4 (quarter). The fourth staff has a treble clef and a key signature of one sharp (F#). The notes are E5 (quarter), D5 (quarter), C5 (quarter), B4 (quarter), A4 (quarter), and G4 (quarter). The fifth staff has a treble clef and a key signature of one sharp (F#). The notes are E5 (quarter), D5 (quarter), C5 (quarter), B4 (quarter), A4 (quarter), and G4 (quarter). The sixth staff has a treble clef and a key signature of one sharp (F#). The notes are E5 (quarter), D5 (quarter), C5 (quarter), B4 (quarter), A4 (quarter), and G4 (quarter). The seventh staff has a treble clef and a key signature of one sharp (F#). The notes are E5 (quarter), D5 (quarter), C5 (quarter), B4 (quarter), A4 (quarter), and G4 (quarter). The score ends with a double bar line and the word 'Fine'.