

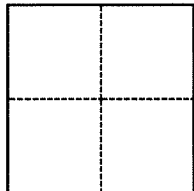
# CORNER RECORD

Agency Index Book: 43 Page: 13  
Document Number CR14475

City of Berkeley County of Alameda, California

Brief Legal Description Fnd City of Oakland Pin Monument in Panoramic Way opposite Lot 14, Block J, & Lot 8, Block M, of University Uplands Tract (7 M 80).

## CORNER TYPE



☐ Government Corner ☒ Control  
☐ Meander ☐ Property  
☐ Rancho ☐ Other

Date of Survey June 20, 2020

## COORDINATES (Optional)

N. 2,143,017.98 E. 6,058,997.55

Elevation \_\_\_\_\_

Units ☐ Metric ☒ U.S. Survey Foot

Horizontal Datum NAD 83

Zone SPC CA 3 Epoch Date (2011)

Vertical Datum NAVD 88

☐ Complies with Public Resources Code §§8801-8819

☐ Complies with Public Resources Code §§8890-8902

PLS Act Ref.: ☐ 8765(d) ☒ 8771 ☐ 8773 ☐ Other:

Corner/  
Monument: ☒ Left as found ☐ Established ☐ Rebuilt ☒ Pre-Construction  
☐ Found and tagged ☐ Reestablished ☒ Referenced ☐ Post-Construction

Narrative of corner identified and monument as found, set, reset, replaced, or removed:

☒ See sheet #2 for description(s):

Fnd Pin set in concrete in standard mon. well w/in Panoramic Way, Sta. ID No. (E/27-R) City of Oakland 1955 shown on Oakland Mon. Map 346.

- Set 3/4" rebar with plastic cap stamped: "LS 4210" as shown on sheet 2.

## SURVEYOR'S STATEMENT

This Corner Record was prepared by me or under my direction in conformance with

the Professional Land Surveyors' Act on February 9, 2021

Signed Vincent D'Alo P.L.S. or R.C.E. No. P.L.S. 4210



## COUNTY SURVEYOR'S STATEMENT

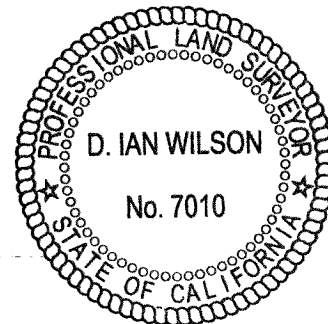
This Corner Record was received

and examined and filed 2/8/2021

Signed D. Ian Wilson P.L.S. or R.C.E. No. 7010

Title ALAMEDA COUNTY SURVEYOR

County Surveyor's Comment



**LEGEND**

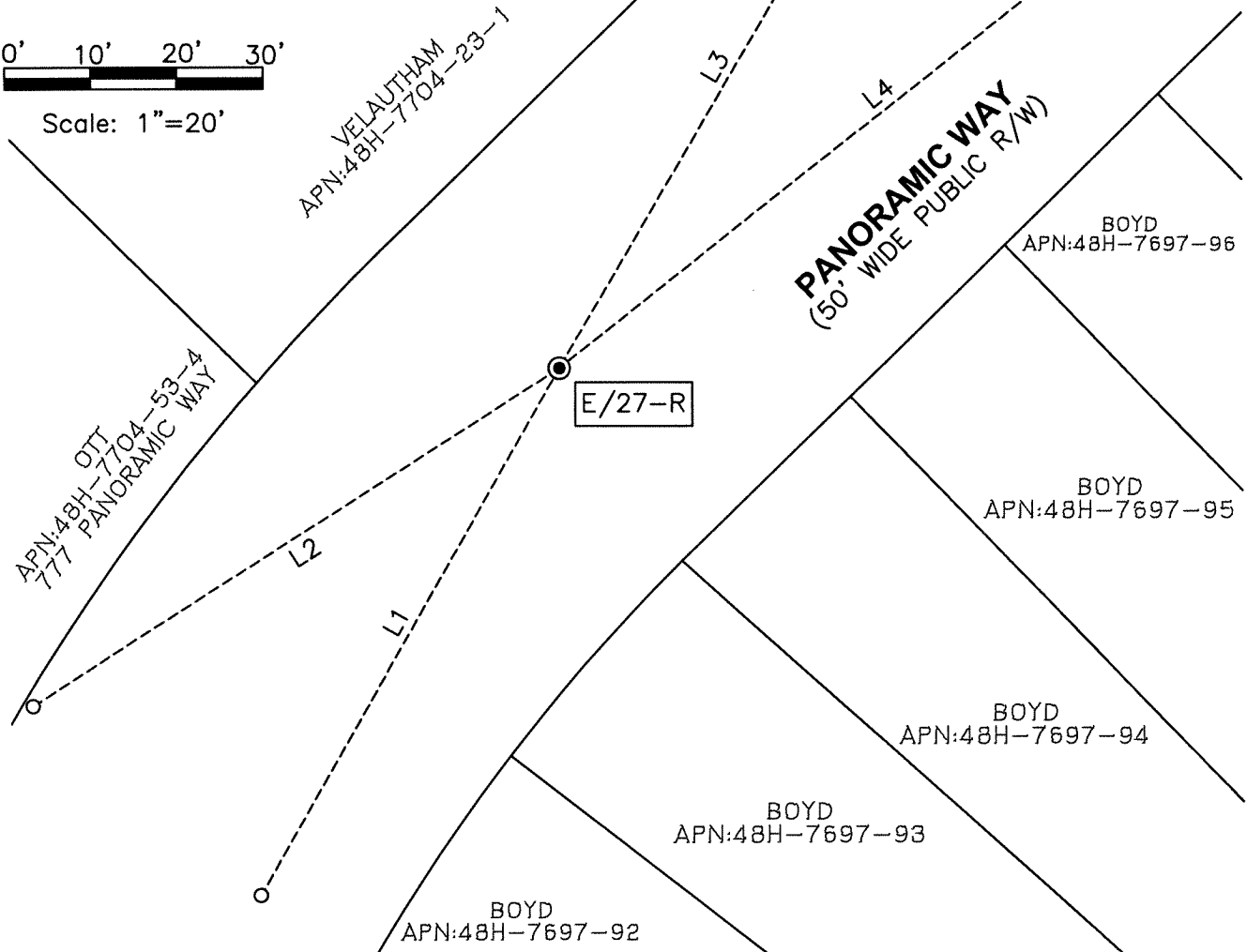
● FOUND CITY OF OAKLAND  
STREET MONUMENT

○ SET ¾" REBAR & CAP  
STAMPED "LS 4210"

E/27-R CITY OF OAKLAND  
MONUMENT IDENTIFICATION

0' 10' 20' 30'

Scale: 1"=20'

**BASIS OF BEARINGS:**

THE COORDINATES AND BEARINGS AS SHOWN HEREON ARE BASED UPON THE CALIFORNIA STATE PLANE COORDINATE SYSTEM OF 1983, (CCS83), ZONE 3, EPOCH (2011). ALL DISTANCES SHOWN, UNLESS OTHERWISE NOTED, ARE IN TERMS OF THE U.S. SURVEY FOOT, SAID BEARINGS ARE BASED LOCALLY UPON FIELD-OBSERVED TIES TO THE FOLLOWING NATIONAL GEODETIC SURVEY (NGS) CONTROL STATIONS:

NGS SURVEY CONTROL STATIONS				
PID	NORTHING	EASTING	HEIGHT	COMBINED FACTOR
AA3817	2,147,068.42	6,057,460.33	1,133.86'	0.99988247
DE8484	2,147,195.38	6,075,261.78	478.08'	0.99991387

**LINE TABLE**

LINE #	DIRECTION	LENGTH
L1	N29°46'02"E	69.91'
L2	S57°32'55"W	72.41'
L3	N30°35'12"E	78.40'
L4	S51°51'06"W	97.62'