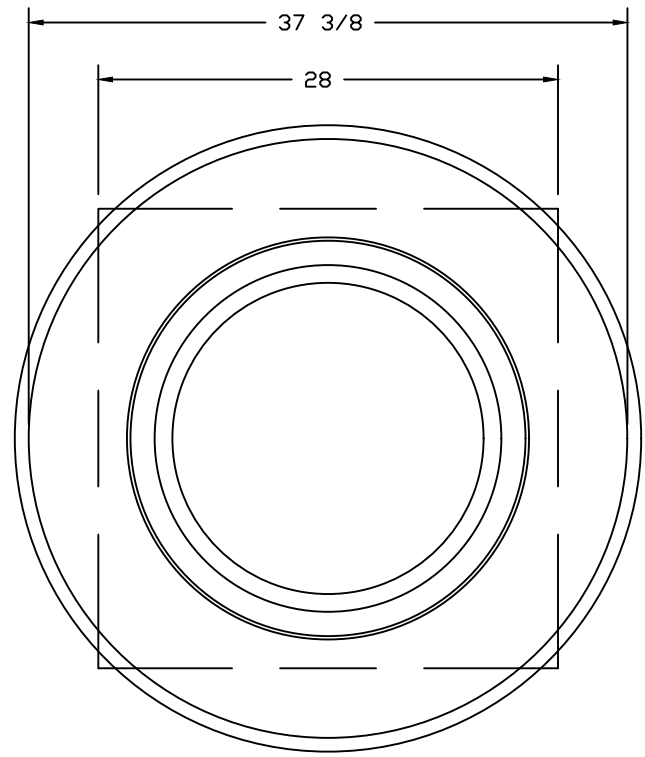
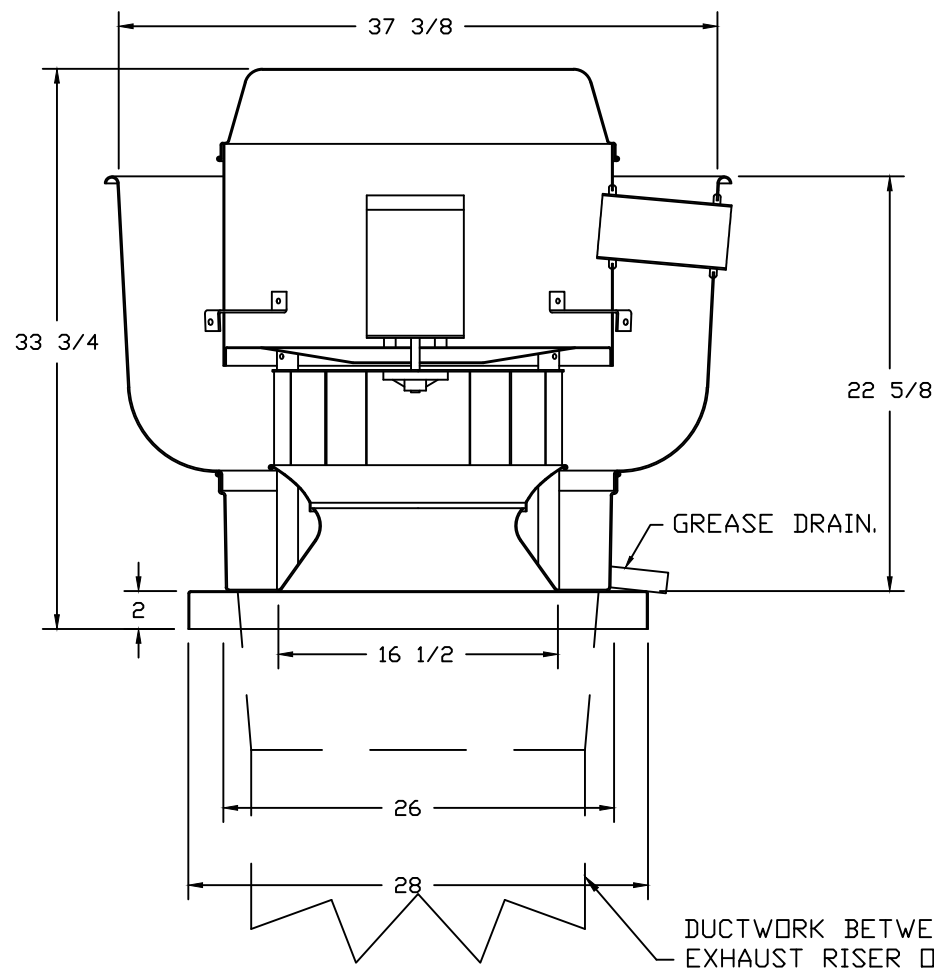


FAN #2 DU180HFA - EXHAUST FAN (HS)



TOP VIEW

FEATURES:

- DIRECT DRIVE CONSTRUCTION (NO BELTS/PULLEYS).
- ROOF MOUNTED FANS.
- RESTAURANT MODEL.
- UL705 AND UL762 AND ULCS-645
- VARIABLE SPEED CONTROL.
- INTERNAL WIRING.
- THERMAL OVERLOAD PROTECTION (SINGLE PHASE).
- HIGH HEAT OPERATION 300°F (149°C).
- GREASE CLASSIFICATION TESTING.
- NEMA 3R SAFETY DISCONNECT SWITCH.

NORMAL TEMPERATURE TEST

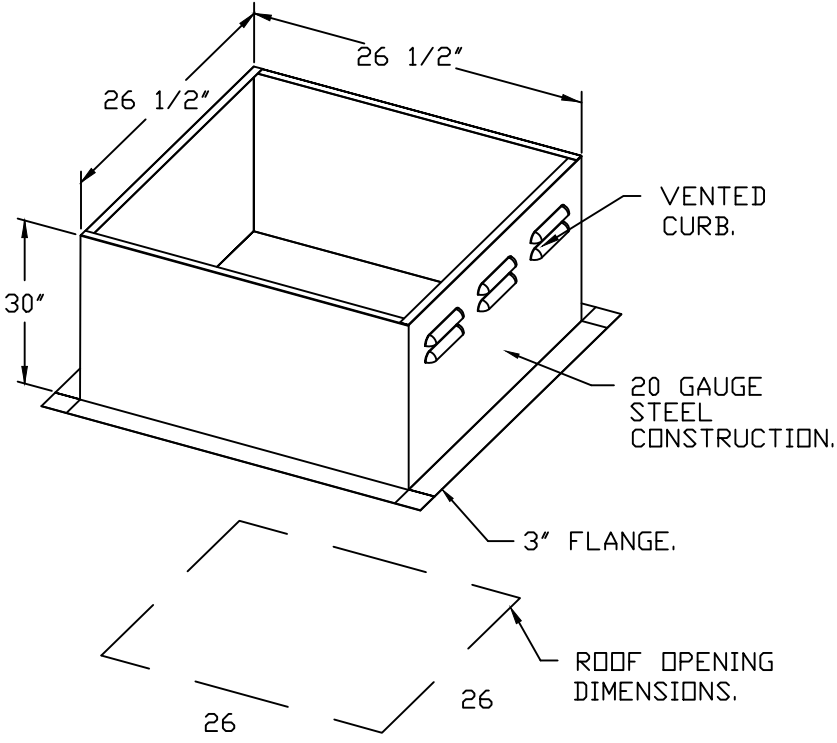
EXHAUST FAN MUST OPERATE CONTINUOUSLY WHILE EXHAUSTING AIR AT 300°F (149°C) UNTIL ALL FAN PARTS HAVE REACHED THERMAL EQUILIBRIUM, AND WITHOUT ANY DETERIORATING EFFECTS TO THE FAN WHICH WOULD CAUSE UNSAFE OPERATION.

ABNORMAL FLARE-UP TEST

EXHAUST FAN MUST OPERATE CONTINUOUSLY WHILE EXHAUSTING BURNING GREASE VAPORS AT 600°F (316°C) FOR A PERIOD OF 15 MINUTES WITHOUT THE FAN BECOMING DAMAGED TO ANY EXTENT THAT COULD CAUSE AN UNSAFE CONDITION.

OPTIONS

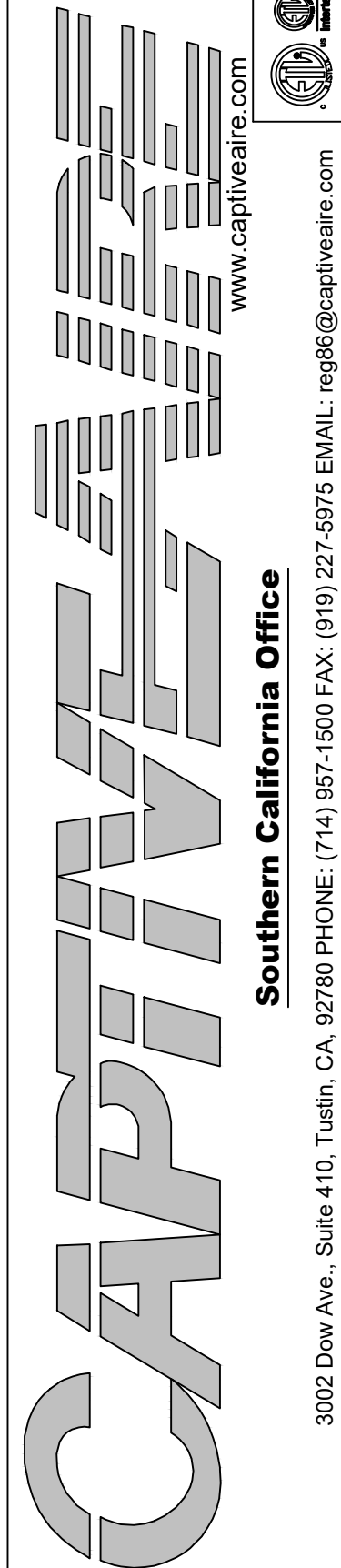
GREASE BOX.
UPPLAST FAN WHEEL ACCESS PORT.
FAN BASE CERAMIC SEAL - INSTALLED AT PLANT - FOR GREASE DUCTS.
MIAMI DADE CERTIFICATION - NDA-1 ALUMINUM UPPLAST.
2 YEAR PARTS WARRANTY.



PITCHED CURBS ARE AVAILABLE FOR PITCHED ROOFS.

SPECIFY PITCH:
EXAMPLE: 7/12 PITCH = 30° SLOPE.

REVISIONS	
DESCRIPTION	DATE



Panda Express & Hibachi-Sa- Jacksonville NC
JACKSONVILLE, NC, 28540

DATE: 2/9/2022

DWG.#:

5318288

DRAWN BY: AH-86

SCALE:

3/4" = 1'-0"

MASTER DRAWING

SHEET NO.

5



PANDA EXPRESS, INC.
1683 Walnut Grove Ave.
Rosemead, California
91770
Telephone: 626.799.9898
Facsimile: 626.372.8288

All ideas, designs, arrangement and plans indicated or represented by this drawing are the property of Panda Express Inc. and were created for use on this specific project. None of these ideas, designs, arrangements or plans may be used by or disclosed to any person, firm, or corporation without the written permission of Panda Express Inc.

REVISIONS:

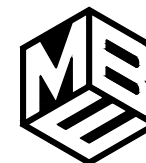
ISSUE DATE:

1	95% SUBMITTAL	04/19/2022
2	100% SUBMITTAL	10/10/2022

DRAWN BY: CM

PANDA PROJECT #: D7898

ARCH PROJECT #:



MARSHALL & BOLLWERK
ENGINEERING, INC.
3380 Trickum Rd.
Building 500, Suite 104
Woodstock, Ga. 30188
p: (678) 785-0333
e: mbe@mbeinc.net

PANDA EXPRESS &
HIBACHI-SAN

MCAS NEW RIVER
CURTIS RD & CAMPBELL ST
JACKSONVILLE, NC 28540

H-004

CAPTIVEAIRE PLAN 5 OF 11

FOR INFORMATION ONLY