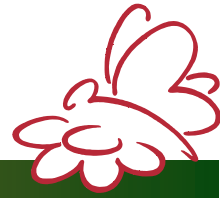


EMISSION MONITORING SYSTEMS



We *care* about the environment

FLUE GAS MEASUREMENT multifunctional · flexible · comfortable



NOVAplus

More measurements
with only
one instrument

O₂

CO
H₂ comp.

CO
high

NO

NO₂

SO₂

H₂S

CO
NDIR

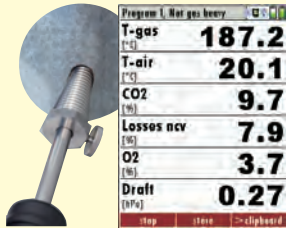
CO₂
NDIR

HC
NDIR

NOVA *plus*

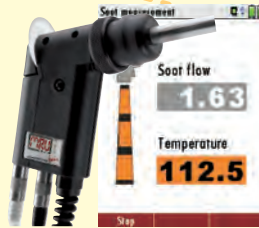
WHENEVER YOUR MEASURING UNIT
NEEDS TO ACCOMPLISH MORE:

FLUE GAS measurement



oil, gas,
solid fuel, etc.
well-arranged
display
of the
measuring
results

SOOT measurement



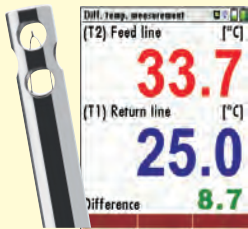
built-in
electronic
controlled
heated
probe shaft
with
soot filter

PRESSURE measurement



high
precision,
by using either
internal
or
external
sensors

TEMPERATURE measurement



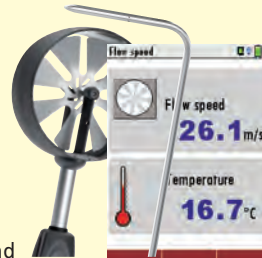
using
thermocouples
with
2 standard
K-type sockets

GAS LEAKAGE detection



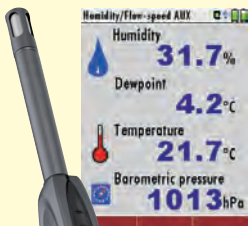
using
HC-sniffer
with cable
and
flexible
detector head

FLOW-SPEED measurement



using
vane probe
or Pitot tube
with
flow rate
calculation

HUMIDITY measurement



measurement
of relative
humidity,
temperature
and
barometric
pressure

Technical specifications options

Option	Measurement components	range	accuracy
Humidity measurements	Humidity	3 ... 98 %	± 3% RH
	Barometric pressure	300 ... 1.200 hPa	± 3 hPa
	Ambient temperature	- 20 ... + 80 °C	± 1 °C
Flow speed measurement	- with Pitot tube	3 ... 100 m/s	± 1 m/s
	- with vane probe	0,25 - 35 m/s	± 0,1 m/s or ± 3 % reading (depending on vane type)
HC detection	Gas leakage detection	5 ... 20.000 ppm	
Gas cooler with automatic condensate draining pump			
CO sensor purge using 2nd pump, for sensor protection			
Bluetooth communication with PC for data transmission			
Probe tubes from 300 mm up to 2.000 mm for T gas up to 1.700 °C			
External pressure sensors to be connected to wireless remote control "RCU Comfort Model" AUX			
Pre-filter for high concentrations of dirt			
Automatic measurement incl. data logging function, user-specific adjustable			

NOVA
plus

MULTIFUNCTIONAL
FLEXIBLE
COMFORTABLE

THAT IS SPECIAL ABOUT

NOVA *plus*



Remote control unit RCU
small-sized, light-weight
with super bright,
colour 3,5" TFT display



Remote control unit
in comfort edition
also usable
as a separate
measuring
instrument,
e.g. for pressure,
temperature,
leakage detection,
and more



built-in high speed printer
for graphical print-outs



contactless RCU
charging (inductive)



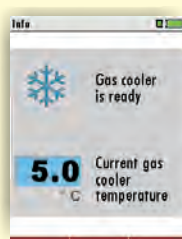
easy-use interfaces:
SD card and USB



SD card and
data logging software

O ₂	CO	NO
NO ₂	SO ₂	H ₂ S
CO NDIR	CO ₂ NDIR	HC NDIR

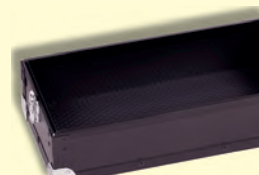
up to 6 electrochemical
sensors and 3-gas NDIR bench



efficient, low
power gas cooler



Self diagnostics



attachable compartment
for accessories

Technical specifications

NOVAplus Multi purpose analyzer	Instrument with up to 6 electrochemical cells, NDIR multi-gas bench and wireless remote control RCU	
Fuel types	natural gas, liquid gas, oil heavy, oil light, pellets, wood, coal; bio diesel, expandable fuel type list	
Measurement components:	<i>range</i>	<i>accuracy</i>
Oxygen O2	0 ... 21,0 Vol-%	± 0,2 Vol-% abs.
Carbon monoxide CO (H2-comp)	0 ... 4.000 ppm * overload up to 10.000 ppm	± 10 ppm or 5 % reading up to 4.000 ppm** or 10 % reading up to 10.000 ppm**
Carbon monoxide CO low (special software and calibration)	0 ... 300 ppm (with 0,1 ppm resolution)	± 2,0 ppm or 5 % reading**
Carbon monoxide CO high	0 ... 4.000 ppm * overload up to 20.000 ppm	± 100 ppm or 5 % reading up to 4.000 ppm** or 5 % reading up to 20.000 ppm**
Carbon monoxide CO very high	0 ... 4,00 % * overload up to 10 %	± 0,02 % or 5 % reading up to 4 %** or 10 % reading up to 10 %**
Nitric monoxide NO	0 ... 1.000 ppm * overload up to 5.000 ppm	± 5 ppm or 5 % reading up to 1.000 ppm** or 10 % reading up to 5.000 ppm**
Nitric monoxide NO low (special software and calibration)	0 ... 300 ppm (with 0,1 ppm resolution)	± 2,0 ppm or 5 % reading**
Nitric dioxide NO2	0 ... 200 ppm * overload up to 1.000 ppm	± 5 ppm or 5 % reading up to 200 ppm** or 10 % reading up to 1.000 ppm**
Sulfur dioxide SO2	0 ... 2.000 ppm * overload up to 5.000 ppm	± 10 ppm or 5 % reading up to 2.000 ppm** or 10 % reading up to 5.000 ppm**
Hydrogen sulfide H2S	0 ... 200 ppm * overload up to 2.000 ppm	± 5 ppm or 5 % reading up to 200 ppm** or 10 % reading up to 500 ppm**
1-gas NDIR bench		
Carbon dioxide CO2	0 ... 40,00 Vol-%	± 0,3 % or 5 % of the measured value**
3-gas NDIR bench		
Carbon monoxide CO	0 ... 10.000 ppm up to max. 10 %	±0,03 % or ±3 % reading**
Carbon dioxide CO2	0 ... 3 % or up to max. 30 %	±0,5 % or ±3 % reading**
Hydrocarbons CH4 (Methane) or	0 ... 10.000 ppm up to max. 3 %	±0,03 % or ±3 % reading**
Hydrocarbons C3H8 (Propane)	0 ... 2.000 ppm up to max. 5.000 ppm	±30 ppm or ±3 % reading**
Stack gas temperature T.Gas	0 ... 650 °C (stainless steel tube) 0 ... 1.100 °C (Inconel steel tube)	± 2 °C ... < 200 °C or 1 % reading** ± 2 °C ... < 200 °C or 1 % reading**
Differential temperature	up to 650 °C or up to 1.700 °C (with suitable material of sampling tube)	
Combustion air temperature T.Air	0 ... 100 °C	± 1°C
Draft/Diff. pressure (base station)	- 100 ... + 100 hPa	± 0,02 hPa
Draft/Diff. pressure (remote control)	- 200 ... + 200 hPa	± 0,02 hPa
Calculated values: (fuel type depending)		
Carbon dioxide CO2	0 ... CO2 max.	± 0,3 Vol-% abs.
Heat losses qA	0 ... 99,9 %	
Efficiency η	0 ... 100 % (120 % for condensing boilers)	
Air Ratio λ	1, ... 9,99	
Excess Air	0 ... 99,9 %	
Combustion calculations	fuel type depending: CO2, Excess Air, Heat losses, efficiency, dew point, CO/CO2 ratio	
Emission calculations	mg/Nm³, NOx as mg/Nm³, including O2 referencing (normalisation) to user settable value	
General specifications:		
Operation temperature	+ 5 ... + 45 °C, max. 95 % RH, none condensing	
Storage temperature	- 20 ... + 50 °C	
Ambient conditions	not in aggressive, corrosive or high dust ambience, not for use in hazardous areas	
Power supply – base station	High energy Lithium-Ion battery 20 h operation, with gas cooler 10 h	
– remote control	High energy Lithium-Ion battery 30 h operation	
Mains	wall-plug grid power supply, 100 - 240 Vac / 50 ... 60 Hz, 12 V DC/5A	
Type of protection	IP 20	
Weight	approx. 7,4 kg (with 2 sensors, probe, power supply, case)	
Dimensions	(B x H x T) 470 x 314 x 235 mm	

* for short-term measurements only!

** which ever is larger!

DATA SUBJECT TO CHANGE WITHOUT NOTICE



Local Phone
021 8690 6777
021 8690 6771
021 9529 3259

GSM Celluler
0816 1740 8927
0812 8006 9024
0817 6700 726

Customer Care
0815 1777 2387

E-Mail
sales@alatuji.com

Blackberry PIN : 2856BC08