
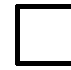




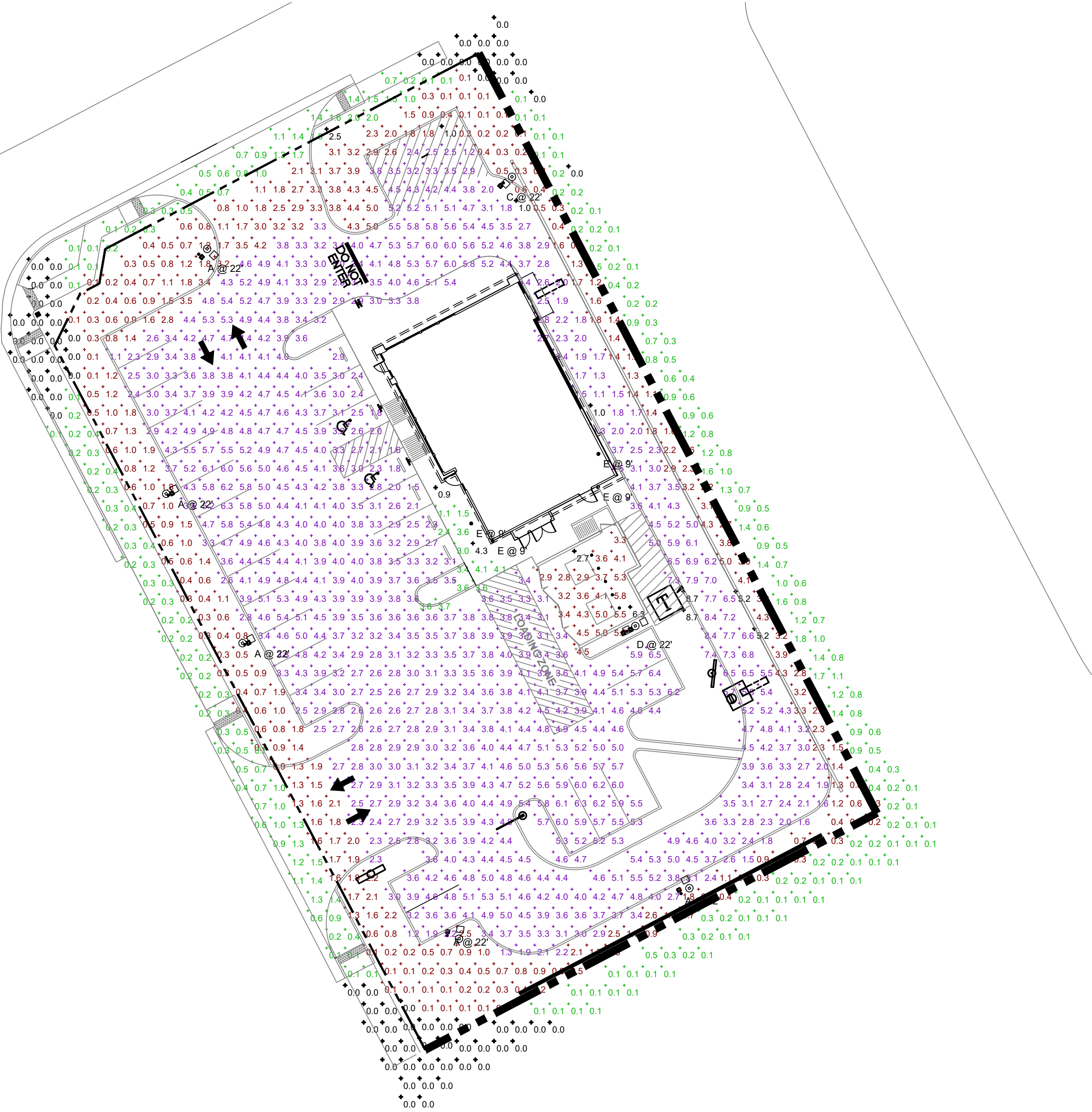
Schedule								
Symbol	Label	Quantity	Catalog Number	Description	Filename	Lumens Per Lamp	Light Loss Factor	Wattage
	A	5	SLM-LED-18L-SIL-FT-40-70CRI-IL- 5 DEGREE TILT	CONTACT RYAN ZINSELMEIER-314-531-2600	SLM-LED-18L-SIL-FT-40-70CRI-IL.ies	12046	1	148.5
	C	1	SLM-LED-18L-SIL-3-40-70CRI-IL	CONTACT RYAN ZINSELMEIER-314-531-2600	SLM-LED-18L-SIL-3-40-70CRI-IL.ies	13767	1	148.5
	D	1	[...]	[...]	[...]	[...]	1	297
	E	4	BUSW	LED Indirect Wall Pack	BUSW-LED.ies	432	1	10.5

Statistics						
Description	Symbol	Avg	Max	Min	Max/Min	Avg/Min
OPEN WALKWAY	+	3.1 fc	4.3 fc	0.9 fc	4.8:1	3.4:1
PARKING/DRIVING AISLES	+	3.9 fc	8.7 fc	1.0 fc	8.7:1	3.9:1
SPILLAGE	+	0.4 fc	2.5 fc	0.0 fc	N/A	N/A
TRASH ENCLOSURE	+	4.2 fc	6.3 fc	2.7 fc	2.3:1	1.6:1
WHOLE SITE	+	1.3 fc	5.2 fc	0.0 fc	N/A	N/A

Note

1. MOUNTING HEIGHT OF 22' (20'POLE)  
2. CALCULATIONS TAKEN AT GROUND LEVEL  
3.CONTACT VILLA LIGHTING- RYAN ZINSELMEIER- RYAN.ZINSELMEIER@VILLALIGHTING.COM- 314-531-2600

SITE LIGHTING FIXTURE SCHEDULE		3	PANDA SITE LIGHTING DESIGN CRITERIA		2
		E-106	NO SCALE		E-106



SITE PHOTOMETRIC PLAN	1
N.T.S.	E-106



PANDA EXPRESS, INC.  
1683 Walnut Grove Ave.  
Rosemead, California 91770  
Telephone: 626.799.9898  
Facsimile: 626.372.8288

All ideas, designs, arrangement and plans indicated or represented by this drawing are the property of Panda Express Inc. and were created for use on this specific project. None of these ideas, designs, arrangements or plans may be used by or disclosed to any person, firm, or corporation without the written permission of Panda Express Inc.

REVISIONS:	
△ SITE LIGHTING UPDATE	11-08-21

ISSUE DATE:	
ISSUE FOR PERMIT	01-29-21
ISSUE FOR BID	04-30-21
ISSUE FOR BID 2	11-02-21
ISSUE FOR BID (DT)	02-04-22

DRAWN BY: AE

PANDA PROJECT #: D8164  
PANDA STORE #: -  
ARCH PROJECT #: 261-321



PANDA EXPRESS  
TRUE WARM & WELCOME  
JEFFERSON AVE. & MORRIS DR.  
NEWPORT NEWS, VA 23605

E-106

HOT - MEDIUM  
SITE PHOTOMETRIC PLAN

TRUE WARM & WELCOME 2300 R6

ISSUE FOR PERMIT 11-02-21

ISSUE FOR PERMIT 11-02-21